

## FACT SHEET

# NORTH EAST LINK

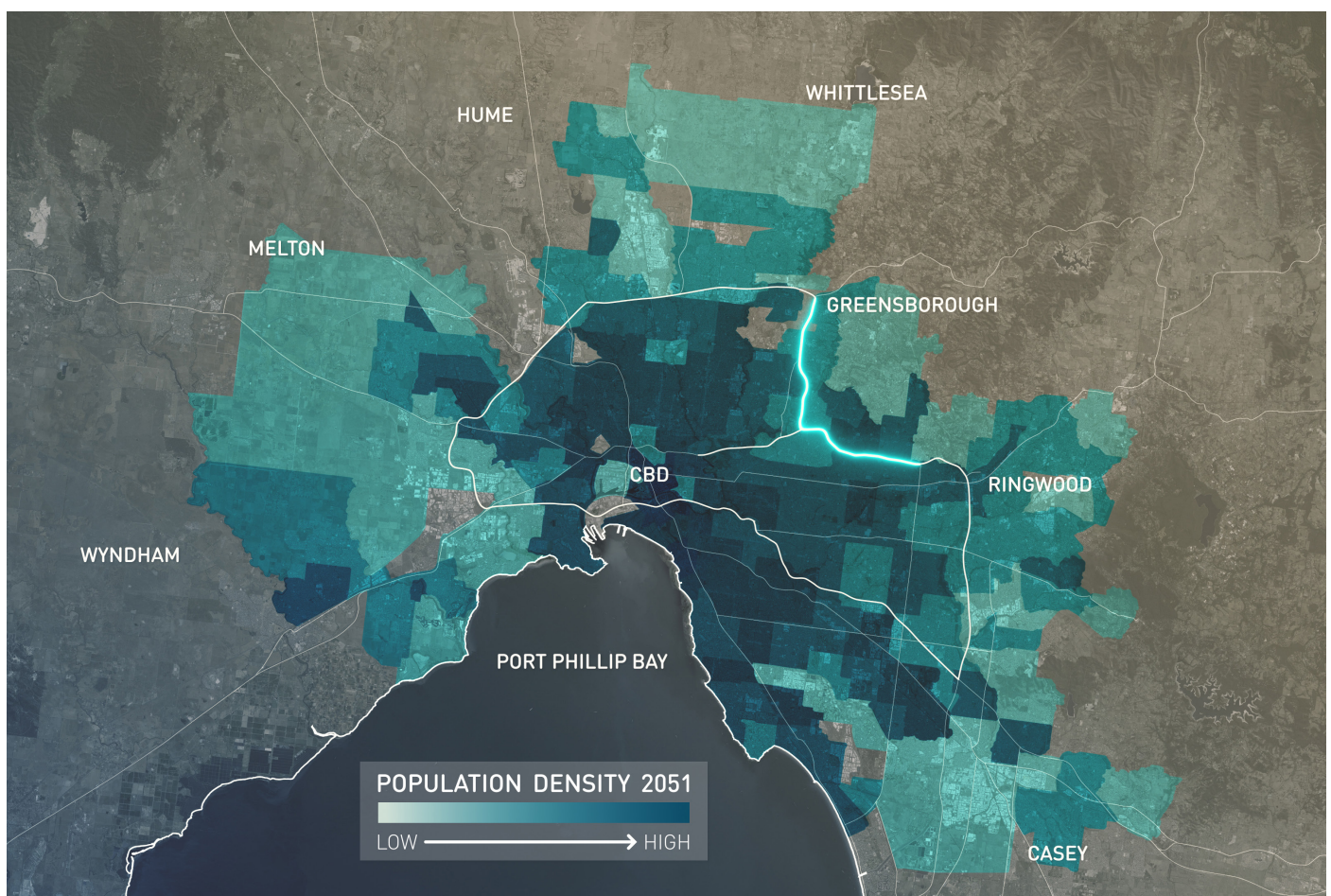
## WHERE IS MELBOURNE GROWING?

As part of our planning for North East Link, we've looked closely at where people are living now and where they will be living in the future.

Melbourne is growing in four main corridors - north, south-east, north-west and west. Growth in the east is constrained by the Urban Growth Boundary.

The Urban Growth Boundary helps direct growth to areas with appropriate infrastructure and services while protecting rural and environmental areas from development pressure.

North East Link will connect Melbourne's key growth areas in the north, east and south-east without extending outside the Urban Growth Boundary.



**SIGN UP FOR PROJECT UPDATES**

[northeastlink.vic.gov.au](http://northeastlink.vic.gov.au)

Authorised and published by the Victorian Government, 1 Treasury Place, Melbourne