

## FACT SHEET

# NORTH EAST LINK

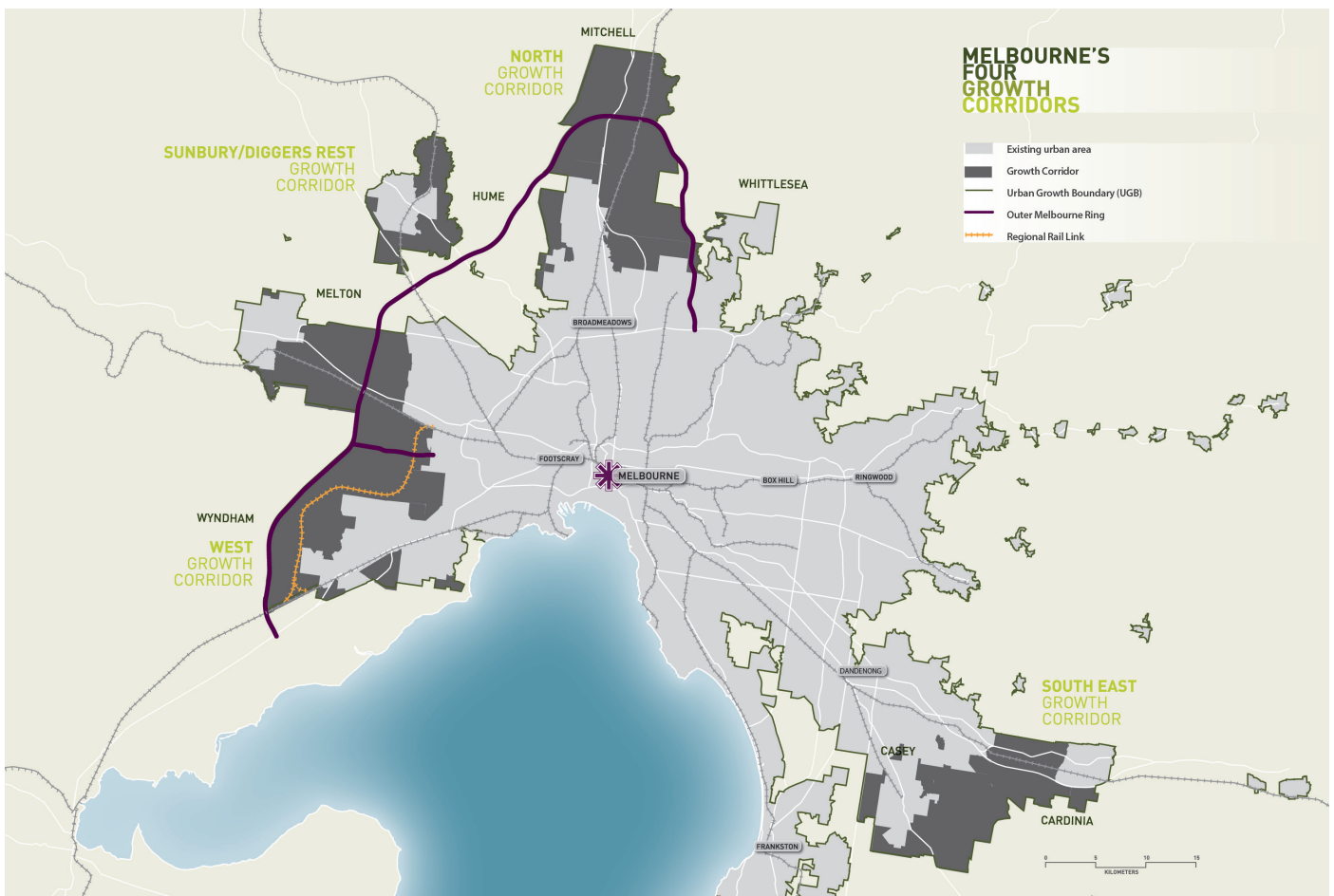
## WHERE IS MELBOURNE GROWING?

As we plan for North East Link, we're looking at where people are living now and where they will be living in the future.

Melbourne is growing in four main corridors - north, south-east, north-west and west. Growth in the east is constrained by the Urban Growth Boundary.

The Urban Growth Boundary helps direct growth to areas with appropriate infrastructure and services while protecting rural and environmental areas from development pressure.

The Urban Growth Boundary was first legislated in 2002. Plan Melbourne 2017-2050 retains the boundary in its current position. The map below shows Melbourne's four growth corridors.



Source: Victorian Planning Authority, 2012, Growth Corridor Plans – Managing Melbourne's Growth

**SIGN UP FOR PROJECT UPDATES**

[northeastlink.vic.gov.au](http://northeastlink.vic.gov.au)

Authorised and published by the Victorian Government, 1 Treasury Place, Melbourne